

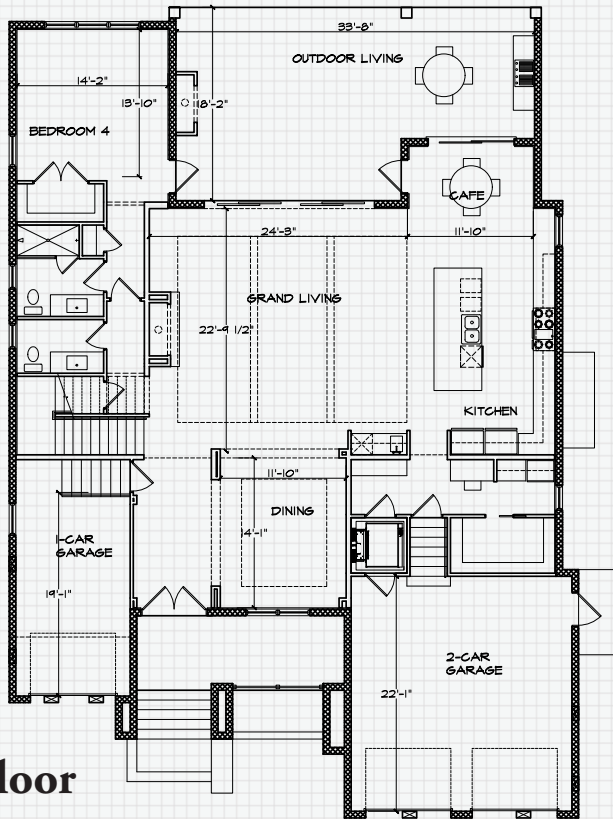
THE MIDTOWN

Contemporary Elegance

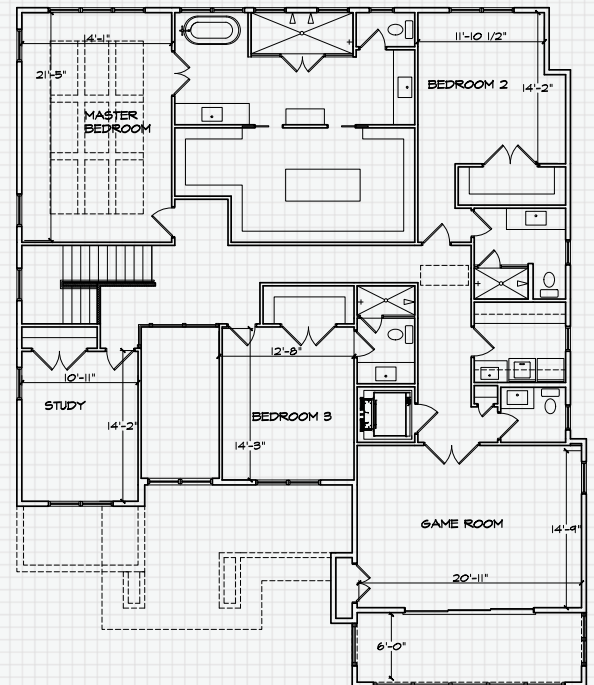
.....

This stunning home is sure to impress! Wide open spaces with every upgrade you have ever dreamed of. Enter through a huge iron front door and to your right is the formal dining room with a tiered ceiling. Straight ahead is the Grand Living room with an inviting fireplace and glass doors leading to the spacious outdoor living area. The adjacent gourmet kitchen includes a huge island and the very best in appliances starting with a 48" Wolf dual fuel gas range with 6 burners and griddle. Also included are a Sub-Zero 36" column refrigerator and matching freezer along with a Jenn Aire dishwasher and undercounter wine cooler. The elegant master suite will be the ultimate getaway. And for the clothes lovers, you will not believe the size of the massive walk-in closet. This home has it all with loads of space for everyone!!

.....



1st Floor



2nd Floor

-
- 4 Bedrooms, 4 Baths, 2 half baths, Study, Game Room, Walk-in Pantry, Mud Room, Laundry Rooms on both floors, Café and a 3-stall garage.
 - This home has 4,556 square feet of living area and 6,225 square feet under roof
 - There is a \$10,000 Landscaping allowance for street trees, shrubs and mulch
 - A traction elevator with 3 doors, holds up to 950 lbs, and 8' high for plenty of space.
 - An \$18,000 Built in closet allowance so you can design your own closets
 - Professionally designed kitchen layout with center island and 42" Upper Cabinets
 - Impact glass on all exterior windows, exterior French doors, and sliding glass doors
 - 7.5" plank Suncrest Supply Saw Grass Hills Monterey wood flooring throughout home except for wet areas.