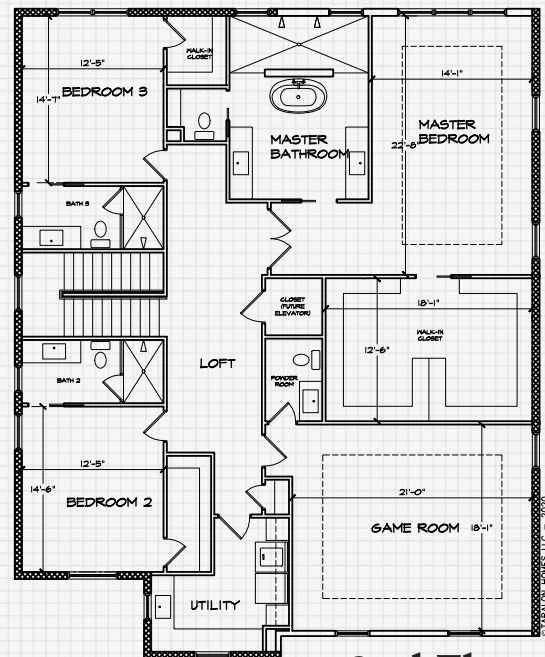
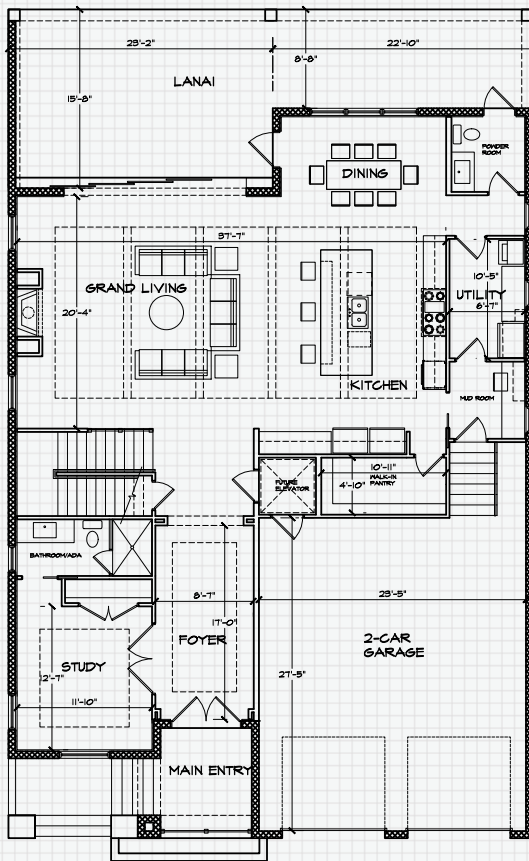


KEY BISCAIYNE

Florida Coastal Style

Welcome to coastal living at its finest! You'll fall in love with the livability and preferred features of this innovative Taralon design. When entering the home, you will first pass by a private Study, complete with its own bath, that could also be used as a Guest Room. A long impressive Entry Hall leads to the Grand Living Room with fireplace, the oversized island Kitchen and Dining Area, all overlooking the Outdoor Living space. 1st floor also has a Powder Bath, Large Utility room, Walk-in Pantry, Mud Room & future Elevator space. The 2nd floor boasts a large Game Room, Powder Room, Utility/Laundry Room and 2 Bedrooms with baths. The crown jewel of this floor is the Master Suite with its extraordinarily spacious bedroom and bath along with a Master Closet measuring 12' X 18'.



- 4 Bedrooms, 4 Baths and 2 Half Baths and 2-Car Garage with 4199 sq.ft. of living area and 5,636 sq. ft. under roof
- Kitchen features 48" dual fuel range, SubZero refrigerator and freezer, wine cooler, coffee/wine bar
- Generous allowance from Taralon for Outdoor Living design – for items such as pool, spa, decking, enclosure and more
- Insulated Low-E impact glass windows and impact glass on exterior French and Sliding glass doors
- 11'4" Ceilings downstairs, 10' Ceiling upstairs and 8' doors throughout
- 7" plank Naturally Aged Medallion Collection wood flooring all rooms except wet areas
- Trane high efficiency 16 SEER AC and Heat pumps – separate units for each floor