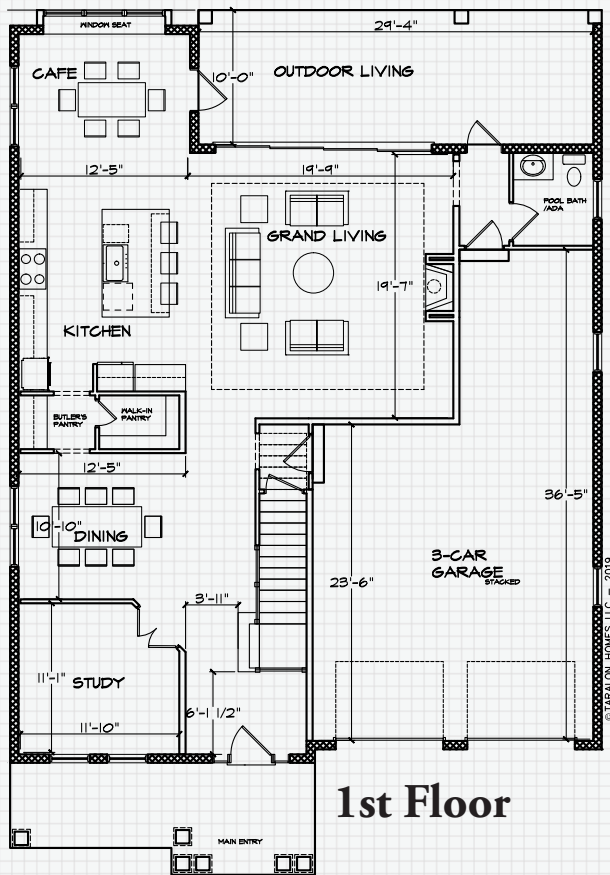


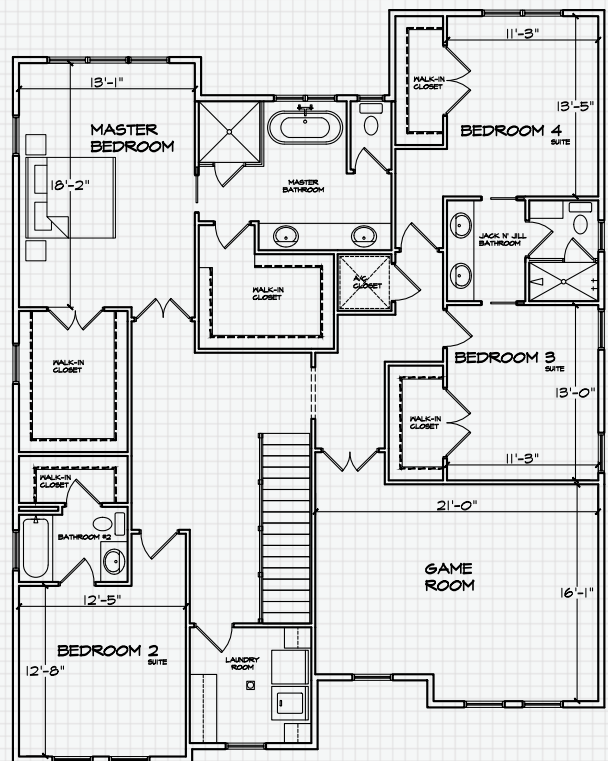
THE AZALEA

Modern Farmhouse Design

This spectacular 2-story home is perfect for a large family! The outstanding island Kitchen with all of the popular upgrades opens to the Grand Living Room with fireplace, Café and the Outdoor Living area. The Kitchen is also connected to the Formal Dining Room by a convenient Butler's Pantry. Upstairs, the Master Suite includes two large walk-closets and the Master Bath features a lovely garden tub and separate shower. It has 3 guest suites with walk-in closets, one with a full bath the other two share a Jack & Jill. There is also a huge upstairs Game Room and the stackable 3-car garage offers plenty of space for all your toys or those extra cars.



1st Floor



2nd Floor

- 4 Bedrooms, 3 1/2 baths, Game Room, Grand Living, Dining and a 3-car Garage
- 3625 square feet of living area and 4747 square feet under roof
- Quartz counter tops in the kitchen and baths with wood cabinets and soft close doors
- Butler's Pantry with under counter wine storage and an additional Pantry for storage
- The built-in custom closet allowance allows you to plan you own storage needs
- The Outdoor Living space features Synergy 1x6 wood plank ceiling with pre-stained finish
- Generous Pool, Spa, Screen, Decking and Child Safety Allowance