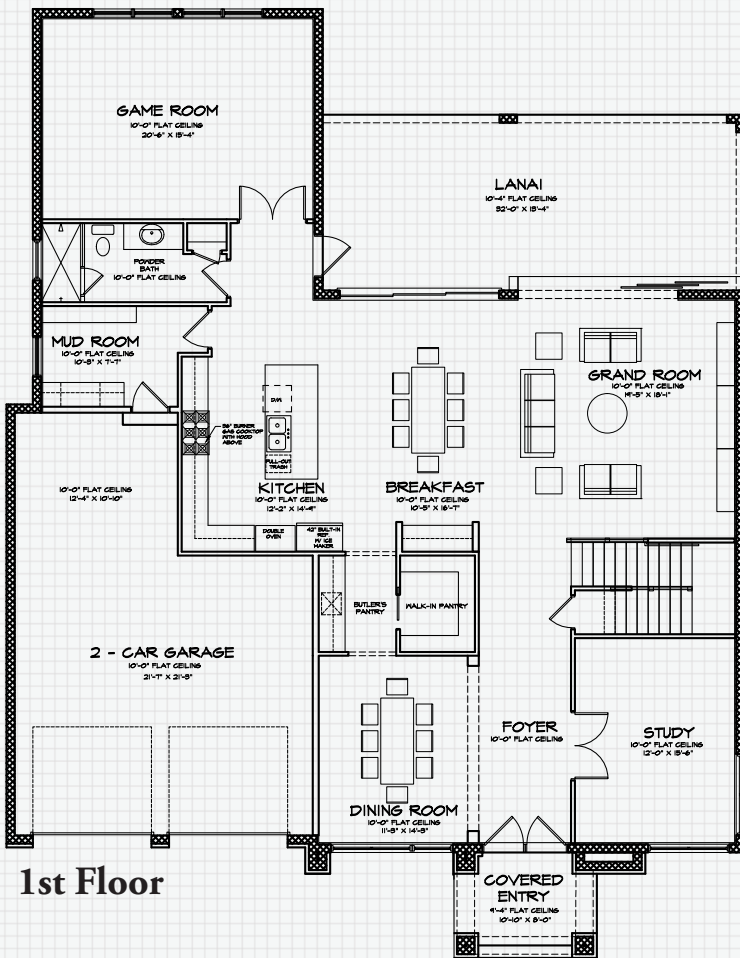
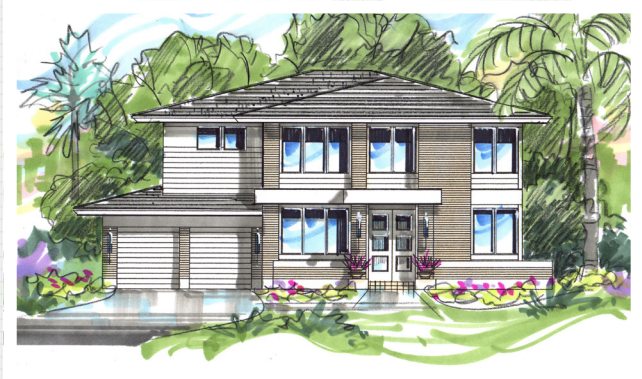


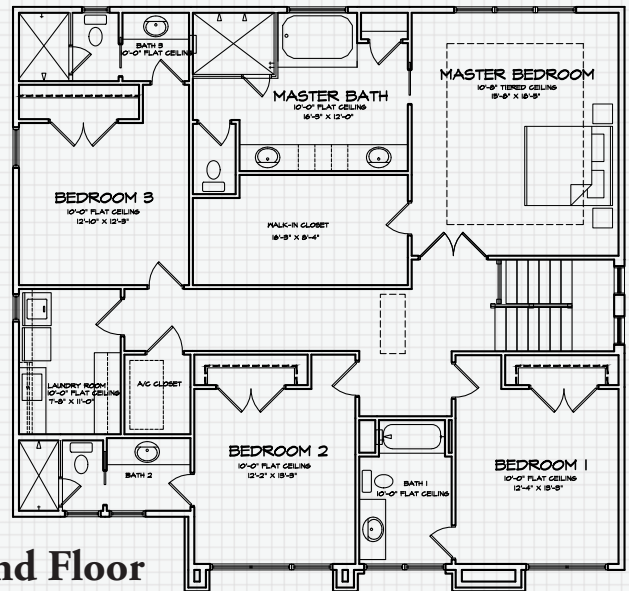
# THE MANHATTAN II

## Urban Privacy

Welcome to Manhattan! Sleek and sophisticated, the well-appointed Manhattan II is the ideal family home and offers many unique appointments. Featuring a unique level of privacy for guests and family members, each of the four bedrooms comes complete with its own full bath along with an additional full bath on the first floor. The first floor also includes a game room, mud room, spacious lanai, private study and formal dining area. The second floor features a large master suite and three secondary suites.



**1st Floor**



**2nd Floor**

- 4 bedrooms, 5 baths, and an oversized Two-car Garage
- Grand Room and Breakfast Area
- Formal Dining area & Butler's Kitchen
- Large gourmet kitchen
- Large Game Room & Private Study
- 5" plank Naturally Aged Maple Black Moss wood flooring in Foyer, Grand Hallway, Kitchen, Café, Butler's Pantry, Dining, Study, Grand Room, Game Room, hallway to Garage, and upstairs hall
- 4,032 square feet of living area and 5,148 square feet under roof