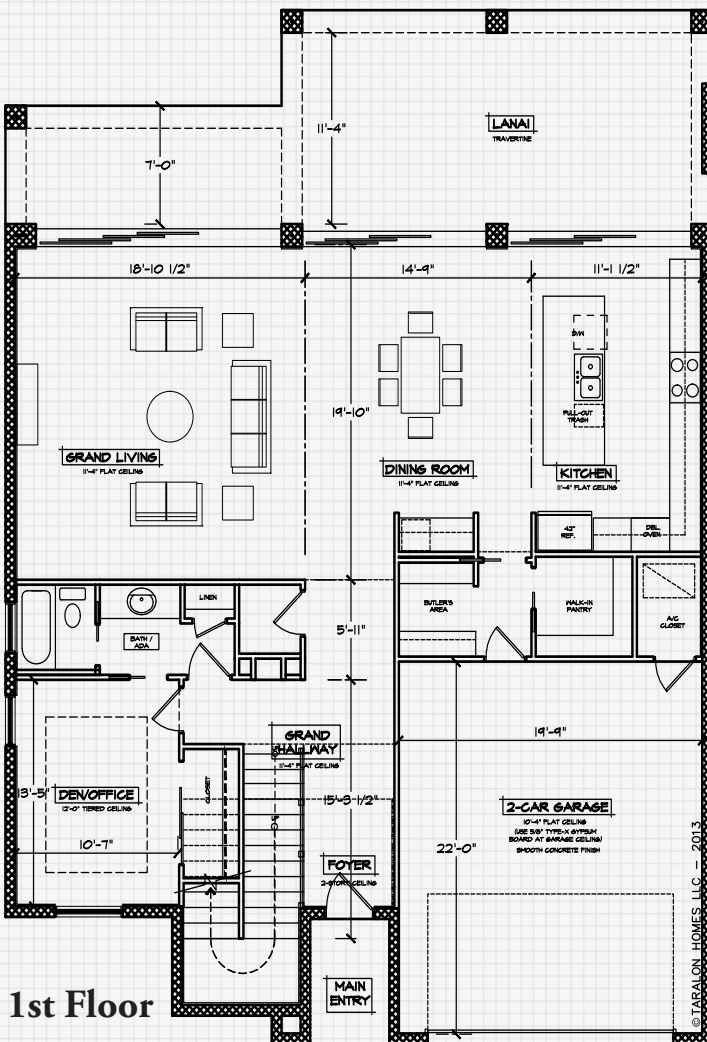


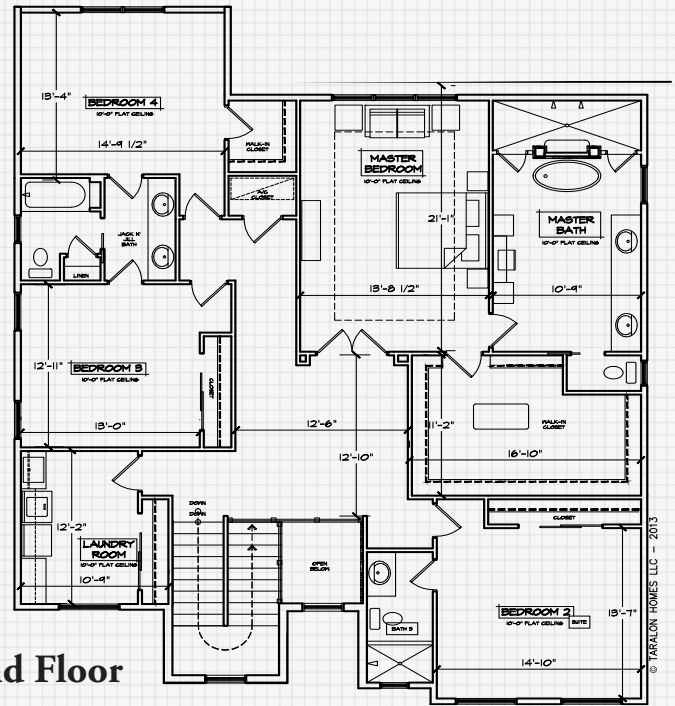
THE SOHO

Modern Sophistication

The Soho's contemporary style and modern sophistication make this floor plan very popular with discriminating home owners. No detail has been overlooked! The handsomely appointed foyer and grand hallway lead to an open living area featuring a gourmet kitchen, large dining area and grand living space. The second floor is features the master suite and 3 additional bedrooms. The oversized lanai is ideal for entertaining and Florida living.



1st Floor



2nd Floor

- 4 bedrooms, 4 bath, including a Jack and Jill
- Elegant entry foyer and grand hallway
- Gourmet kitchen with Butler's area and walk-in pantry
- Open floor plan
- Private office
- 3,679 square feet of living area and 4,717 square feet under roof